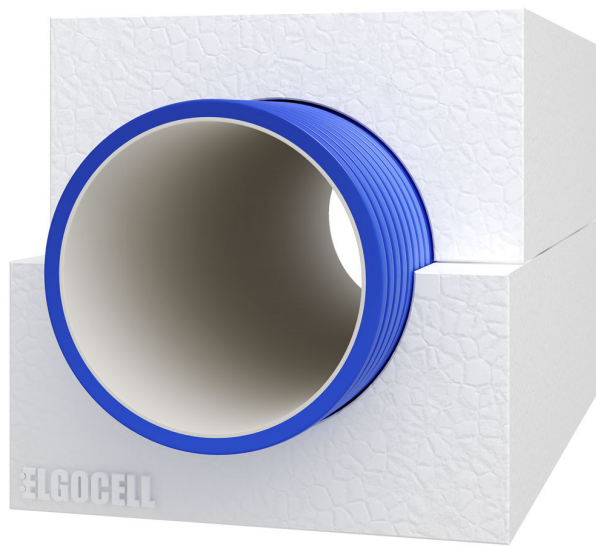


PLEASE NOTE THAT THIS IS AN ABRSTRACT OF THE SWEDISH  
TECHNICAL MANUAL.

FOR ANY INQUIRIES PLEASE CONTACT ELGOCELL.

## INSTALLATION INSTRUCTIONS EPS PIPE™



LOWER CARBON FOOTPRINT 

### INSTALLATION OF INSULATION WITH INSET

#### EXPANDED POLYSTYRENE (EPS) – DELIVERY AND HANDLING INSTRUCTIONS

Please ensure suitable access is available for delivery, as ELGOCELL will be using articulated lorries. Note that off-loading of goods is not included in the quotation.

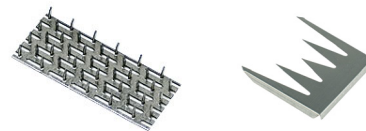
The EPS will be delivered on pallets, and appropriate mechanical equipment is required for safe off-loading.

Due to the lightweight nature of EPS, make sure it is securely tied down and anchored during storage to prevent movement or damage.

The delivery of mounting accessories such as steel fixing joints and toothed-plate connectors will be sent separately.

Please verify that all delivered materials match the specifications outlined in the quotation.

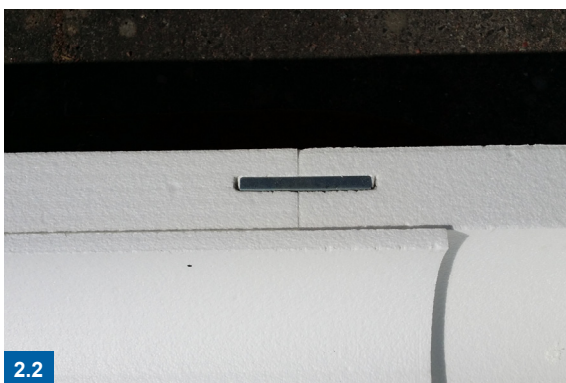
Where applicable, the delivery will also include prefabricated bends, either vertical, horizontal, or both.



#### INSTALLATION

Place the bottom sections [1] according to site drawing provided by the specifier. Place the top section alongside the trench for later installation.

Use one fixing joint on each side to connect the bottom sections [2.1]. Alternatively, the joint can be mounted from above or the side of the insulation [2.2].



### INSTALLATION OF INSULATION WITH INSET



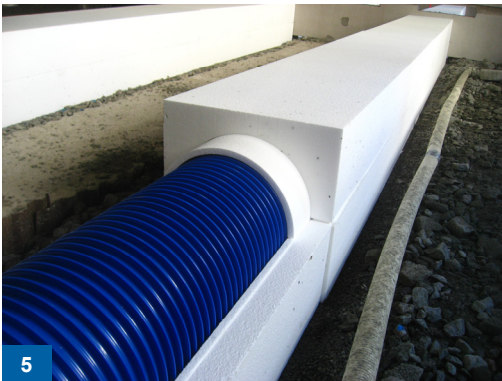
3

Measure where to place the sleeve and cut the inset



4

Inset is placed on top of the ducts



5

The top section is placed on the inset



6

The top section is fixed with toothed-plate connectors



7.1

Adjustment with hand saw



7.2

Adjustment with hot wire



A

Insulation cut for tees



B

Prefabricated bends